

WAYNE COMMUNITY COLLEGE

3000 Wayne Memorial Drive
Goldsboro, NC 27534
919-735-5151
www.waynecc.edu



Wayne Community College is an Equal Opportunity Affirmative Action College and accommodates the needs of individuals with disabilities.

M A S T E R P L A N

A C K N O W L E D G E M E N T S

Wayne Community College Board of Trustees

Tommy Jarrett, Chair

Tommy Cox, Vice-Chair

Patricia Burden

Dr. Michael Gooden

Timothy Haithcock

Al King

Bea Lamb

Randy McCullen

Joanne Roberts

Keith Stewart

Bobby Strickland

Gwyn Wilson

SGA Representative: Shawna Morton

Edward H. Wilson, Jr.

Secretary to the Board
& President of the college



P R O P O S E D U T I L I Z A T I O N

Buildings	Departments	Project Cost	Replacement / Projected Cost (2010)
F	Hocutt Building (Automotive Technology & Engineering)	\$ 3,523,000	\$ 5,901,000 *
D	Holly Building (Health & Sciences)	\$15,850,000	\$ 26,548,750 *
E	Wayne Learning Center (Student Center, Library, Student Services, & Classrooms)		
G	Cedar (Energy Plant & Maintenance)		
A	Azalea Building (Mechanical Studies & Social Sciences)	\$ 7,800,000	\$13,065,000 *
C	Dogwood Building (Arts & Mathematics)		
B	Magnolia Building (Agriculture & Technology)	\$ 6,226,700	\$ 10,430,000 *
H	Pine Building (Allied Health)		
N	Oak Building (Childcare Center)	\$ 763,000	\$ 958,800 *
I	Walnut Building (Continuing Education & Literacy)	\$ 4,374,000	\$ 5,582,000 *
K	Spruce Building (Business Technologies Center)	\$ 4,304,000	\$ 5,232,000 *
J	Future 2-Story Classroom Building	\$ 5,500,000 **	
L	Future 2-Story Classroom Building	\$ 5,500,000 **	
M	Future 2-Story Classroom Building	\$ 5,500,000 **	
O	Activity Center	\$ 9,500,000 **	

* Replacement costs of existing buildings and buildings under construction are calculated at 4.5% per year.

** Future construction is shown in estimated 2010 costs

Careful planning for the future continues. Since the college is committed to protect the environment and to conserve energy resources, all future buildings will be constructed using the Leadership in Energy Design (LEED) and US Green Building Council (USGBC) model.

The acquisition of 10.7 acres in 2002 ensures the college will have sufficient space to allow orderly growth of future academic programs and services. The dynamic interaction between the community, students, staff, and faculty will continue to be reinforced through careful planning well into the next century.



T H E N E X T T E N Y E A R S

In November 1975, the Wayne Community College Board of Trustees commissioned a nationally known design firm to prepare a “report for the purpose of insuring [that] the current and future needs of their college will be accommodated within a framework providing built-in capabilities for flexibility and a unifying architectural identity.” How well this framework has been adhered to is a tribute to the Trustees, and the Administration of the College.

Careful integration of academic, technical, and basic skills programs as well as support services is apparent on the campus. This integration, along with quality spaces both in and out of doors, encourages student interaction and a feeling of community. The consistent style of the architecture maintains a sense of place and unity. As the campus grows, the deliberate scale and clarity of circulation will be reinforced.

As a result of the college’s strategic planning and environmental scanning process, the anticipated growth in allied health, communications, and other emerging technologies such as bio and nano technology will lead the college to more sophisticated science and technology programs. The addition of a “Middle College” to the campus will require dedicated academic and support services. Support facilities will need to expand as well: Dining, Bookstore, Physical Education, and casual recreation will all grow to accommodate the needs of the students and community.



T H E C O L L E G E

Wayne Community College’s 175 acre main campus is located in Goldsboro, North Carolina at 3000 Wayne Memorial Drive. Ten modern buildings on a new campus contain more than 350,000 square feet of state-of-the-art classrooms, laboratories, and offices. To accommodate growth in present and proposed programs, additional construction worth approximately \$4.3 million should be completed in fall of 2006.

Off campus facilities include a light construction facility on the old campus and an aviation classroom building and hanger at the Goldsboro-Wayne Airport. In addition, curriculum and continuing education courses are taught in various locations throughout Wayne County.

M I S S I O N S T A T E M E N T

Wayne Community College is a student-centered, public, two-year college with an open-door admissions policy. The college serves individuals, business and industry, and other organizations with quality, economical, and convenient learning opportunities.

In order to fulfill our mission most effectively, the college strives to:

- Develop both personal and marketable skills in all students.
- Develop basic learning skills in all students.
- Enable students to continue their education at other institutions.
- Increase the global and cultural awareness of students and community.
- Provide for the training needs of local business and industry.
- Enhance the quality of life in the community.

G O A L S

Students: Enhance student success through college-wide programs and services.

Educational Programs: Provide opportunities for excellence in learning through accessible, high quality educational experiences.

Faculty and Staff: Enhance the performance of faculty and staff through learning opportunities and incentives.

Administration and Finance: Improve the efficiency, productivity and responsible use of all available resources through a comprehensive planning and management system.

Facilities: Provide an attractive, flexible, and accessible learning environment that meets the needs of the community served.

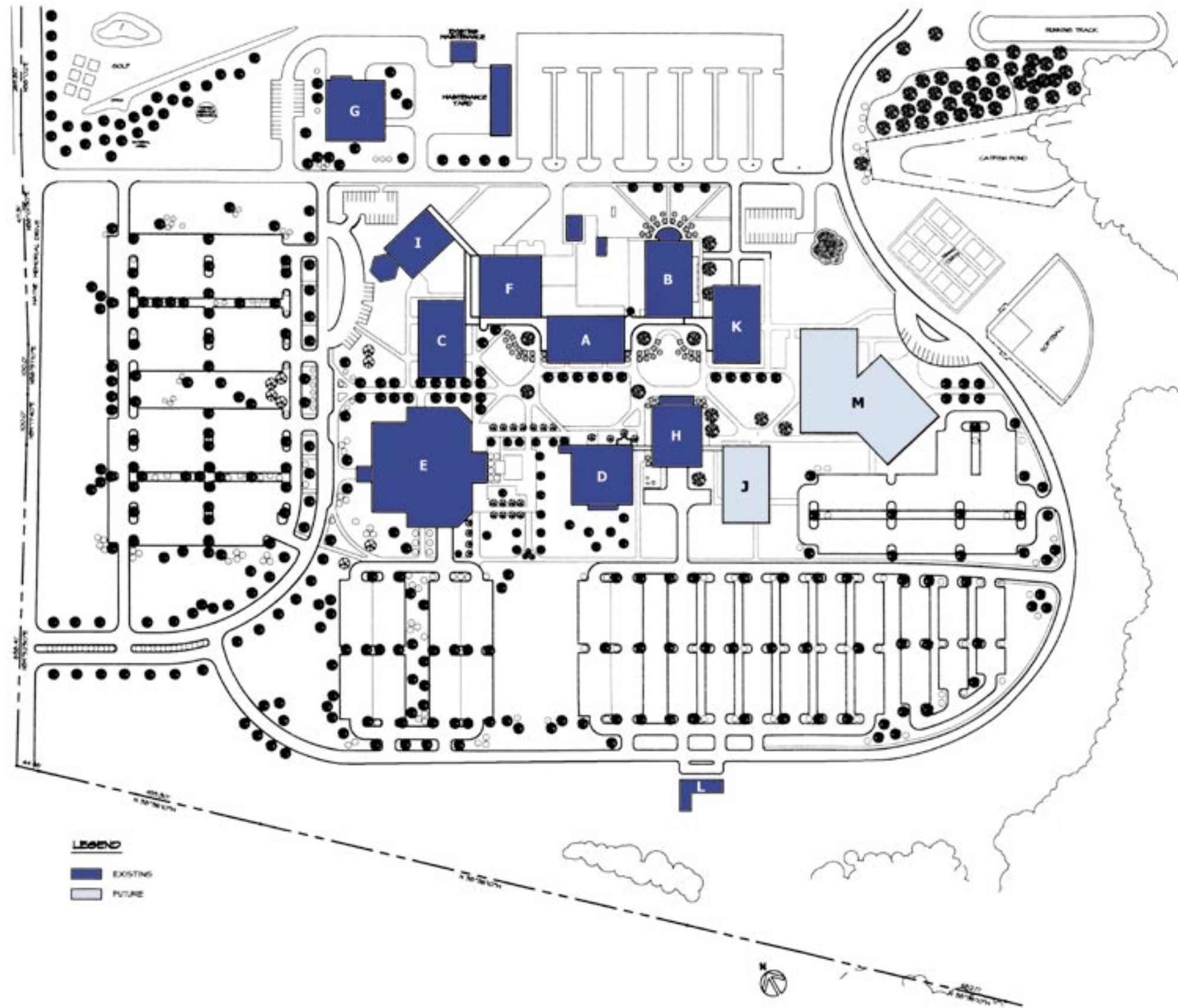
Institutional Advancement: Enhance the effectiveness and accountability of the college through integrated planning, research, marketing, resource development, and management.

Community: Strengthen the partnership between the college and the community through programs and services.

Technology: Integrate state-of-practice technology in all aspects of the college’s programs, services, and operations.

Diversity: Provide programs and services that respond to the diversity within the college, local community, and global community.

BUILDINGS



- A Azalea
- B Magnolia
- C Dogwood
- D Holly
- E Wayne Learning Center
- F Hocutt
- G Cedar
- H Pine
- I Walnut
- J Future 2-Story Classroom Building
- K Spruce
- L Future 2-Story Classroom Building
- M Future 2-Story Classroom Building
- N Oak
- O Activity Center

For proposed building utilization, see page six