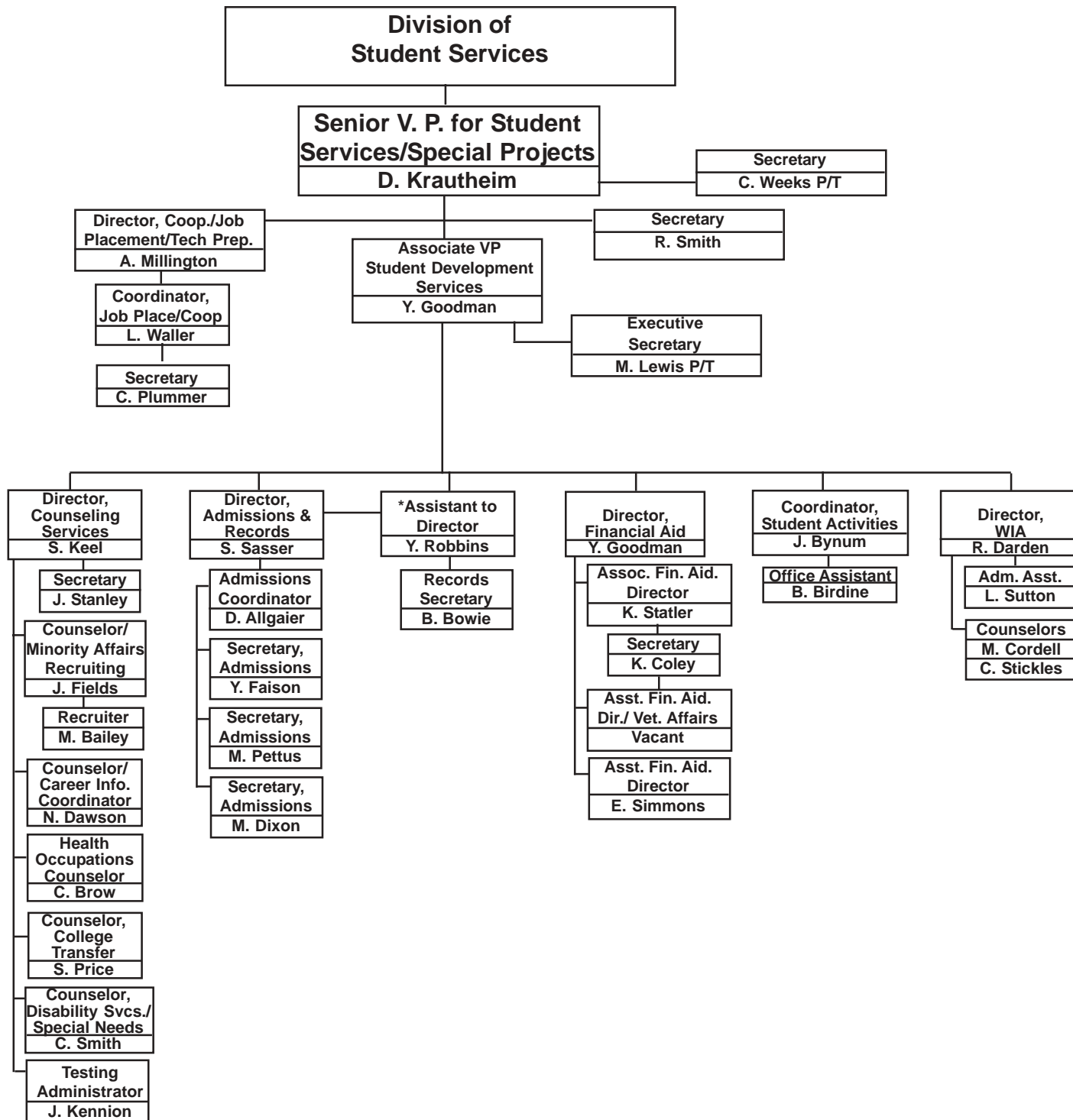
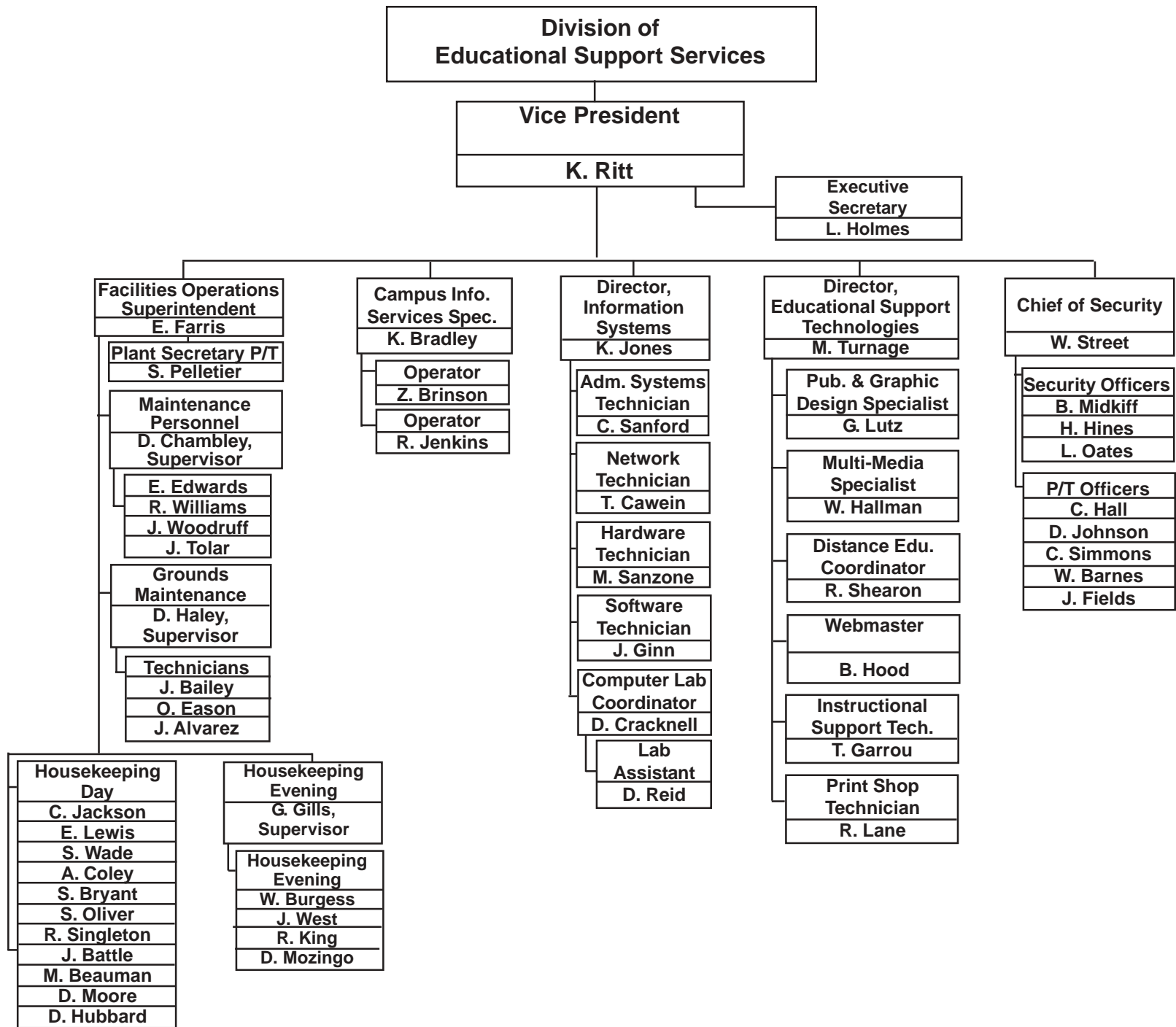


*Shared Position with Admissions & Records

**Shared Position with Continuing Education



*Shared Position with Curriculum



**Division of Continuing Education and
Work Force Preparedness**

**Vice President
R. White**

**Director, Admissions &
Records
W. Madry**

**Executive Secretary
S. Smith**

**Records and
Registration
F. Thorne P/T
K. Mewborn P/T
P. Outlaw P/T**

***Evening
Coordinator
R. Harris P/T**

**Evening Programs
Clerical
M. Kersey P/T**

