

# The Economic Value of WAYNE COMMUNITY COLLEGE

## ALUMNI IMPACT



Impact of the increased earnings of WCC's alumni and the businesses they work for

**\$176.6 million**  
ANNUAL ADDED INCOME

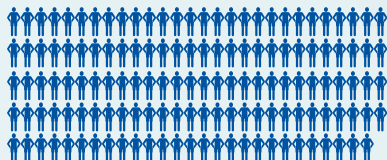
an economic boost similar to hosting the World Series

**30x**



or

**2,786**  
JOBS SUPPORTED



## OPERATIONS SPENDING IMPACT

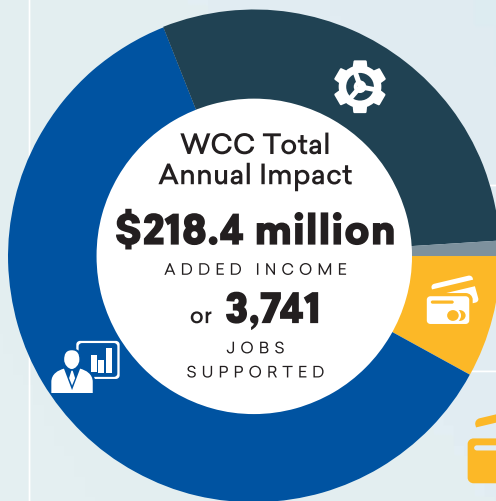
Impact of WCC's payroll and day-to-day spending

**\$27.4 million**  
ADDED INCOME



enough to buy **805** new cars

or **639** JOBS SUPPORTED



**\$149 thousand**  
ADDED INCOME

## CONSTRUCTION SPENDING IMPACT



## STUDENT SPENDING IMPACT

**\$14.3 million**  
ADDED INCOME

enough to buy

**961**



families\* a year's worth of groceries

Impact of the daily spending of WCC students retained and attracted to the region

or **314** JOBS SUPPORTED



\* family of four    ♀ = 20 jobs

## About Wayne Community College



**4,268**  
Credit Students



**6,920**  
Non-Credit Students



**558**  
Employees

## For every \$1 invested by...

### STUDENTS

\$1 = **\$5**  
in lifetime earnings

### TAXPAYERS

\$1 = **\$3.9**  
in added taxes and public sector savings

### SOCIETY

\$1 = **\$12.2**  
in added state revenue and social savings

## About Wayne County

**\$4.5 billion**  
Total GRP

**59,052**  
Total jobs



## Average Earnings in the WCC Service Area

The average associate degree graduate earns \$10,000 more than a high school graduate at their career midpoint.

